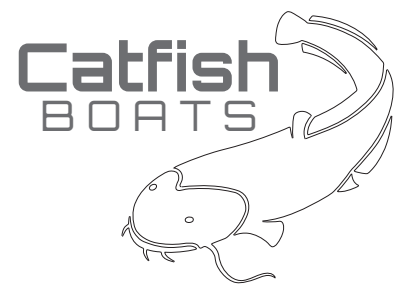


Topsham Ferry

Outboard Open Ferry



Topsham Ferry

General

L.O.A: 7.00 Metres
Beam: 2.00 Metres
Draft: 0.35 Metres
Construction: Aluminium
Power: 25hp
Service Speed: 14 Knots
Load Capacity: 2000kg

General Description

7.0 metre aluminium "Vee Bottom 'Eco' " type hull to combine stability and comfort with efficiency of operation. The hull sections forward afford a great amount of lift to ensure smooth water flow around the hull and reduce spray and wave making. Aft the hull profile provides excellent load carrying capability and guarantees clean water flow to the propeller.

Welded aluminium construction throughout for minimal maintenance, maximum working life and continual operation. Marine grade 5083 (N8) Lloyds approved aluminium is used on all plating in the construction. The material used on the hull plating is 4mm thick as is the internal transverse, longitudinal and bulkhead frames. In addition heavy duty alloy plate is used to construct the transom and supports. Heavy-duty HE30 extrusions are used for stringers, chines, support angles and channels.

Alloy 'TreadPlate' will be used on the cockpit sole and aft gill bracket, which will provide mounting for single outboard motor.

Alloy 4"x2" box section will be used for the gunwales, with 1" ¼ alloy tube along inside of hull/gunwale for multi positioning of 3x bench seats. Two alloy storage boxes in the aft cockpit for storage.

Aluminium tubular aft gantry, for the mounting of navigation lights etc..

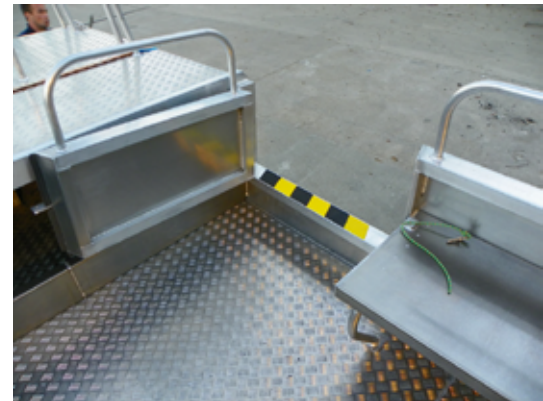
Aluminium tubular forward bicycle rack, mounted on specially fabricated bow section, to accommodate 6 Bicycles.

Alloy mooring bollards in forward and aft quarters of boat, constructed from heavy duty alloy tube fully welded into hull for optimum strength.

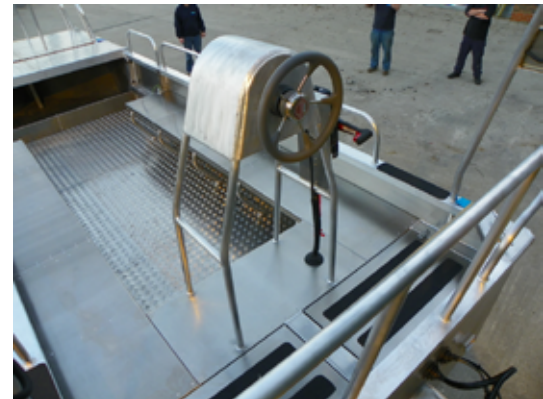
Aluminium Boatbuilding Co. Ltd.
Mill Rythe Lane
Hayling Island
Hampshire
PO11 0QG
paul@abcsales.co.uk



Trailable



Side Door Access



Helm



Stable Ride